

PERFIL DE ALUMINIO AL-ALP7575-R

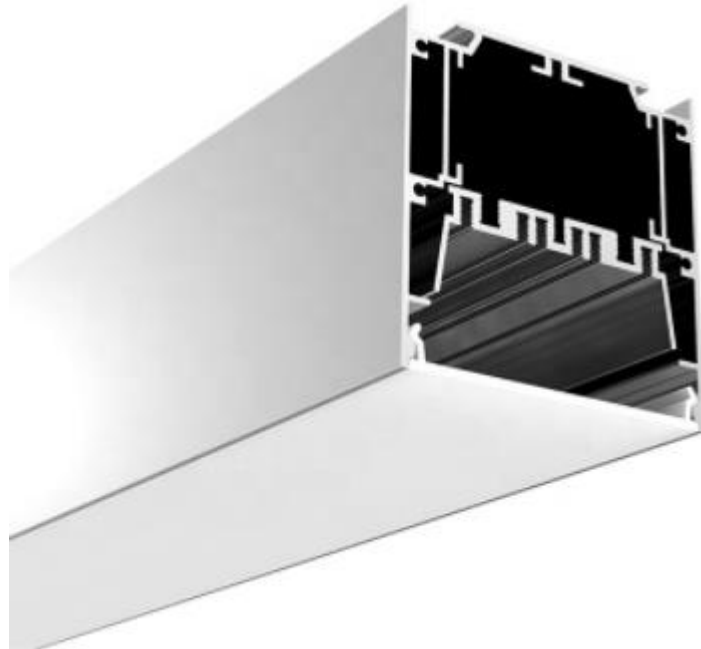
DESCRIPTION:

EXTRUDED ANODIZED ALUMINUM
PROFILE FOR SURFACE AND
SUSPENSION

FROSTED

LENGHT 2 M,

RoHS CERTIFICATION

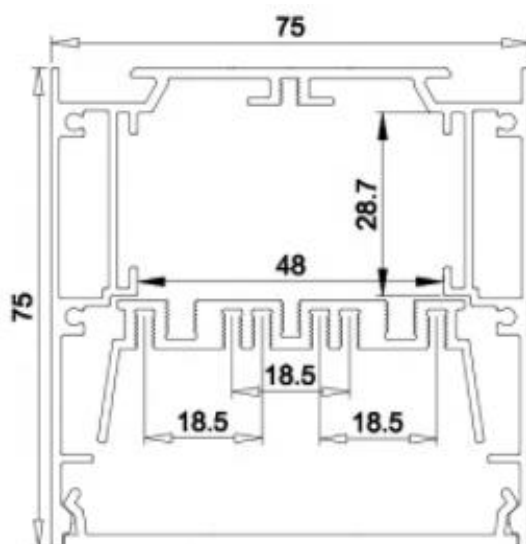


ITEM CODE	AL-ALP-7575-R
IP RATE	20
LENGHT	2 METERS
MOUNTING TYPE	SURFACE AND SUSPENSION
DIFFUSER	FROSTED
MATERIAL	ALUMINUM

TECHNICAL DATA SHEET



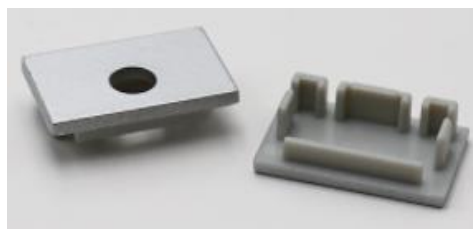
MEDIDAS (MM)



TAPAS

CLAVE

EC-ALP7575-R



CLIPS DE SUJECION

CLAVE

MC-ALP7575-R



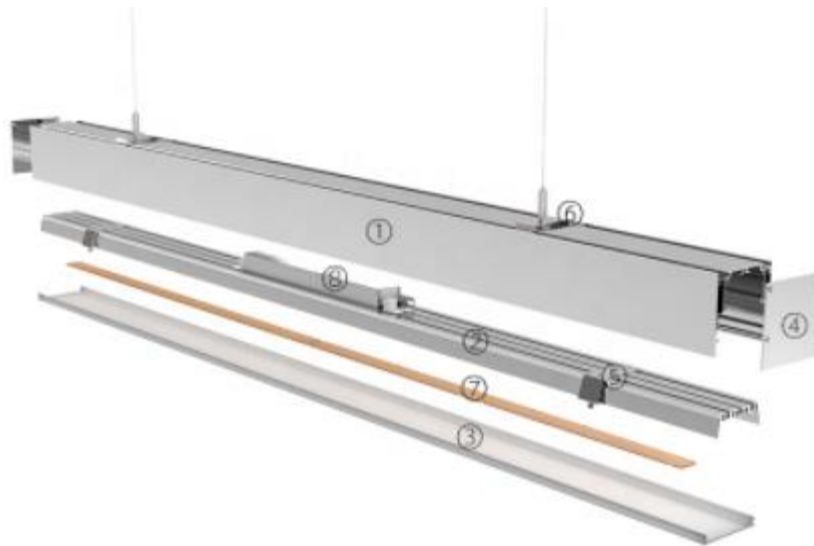
CABLE SE SUSPENSION

CLAVE

SW-ALP7575-R



INSTALATION



- ① Aluminum Profile
- ② Aluminum Heatsink
- ③ PC Frosted Opal Diffuser
- ④ Aluminum End Caps
- ⑤ Internal Clips
- ⑥ External Clips + Suspension Wire Kits
- ⑦ LED Module
- ⑧ LED Driver