

PERFIL DE ALUMINIO AL-ALP3875

DESCRIPTION:

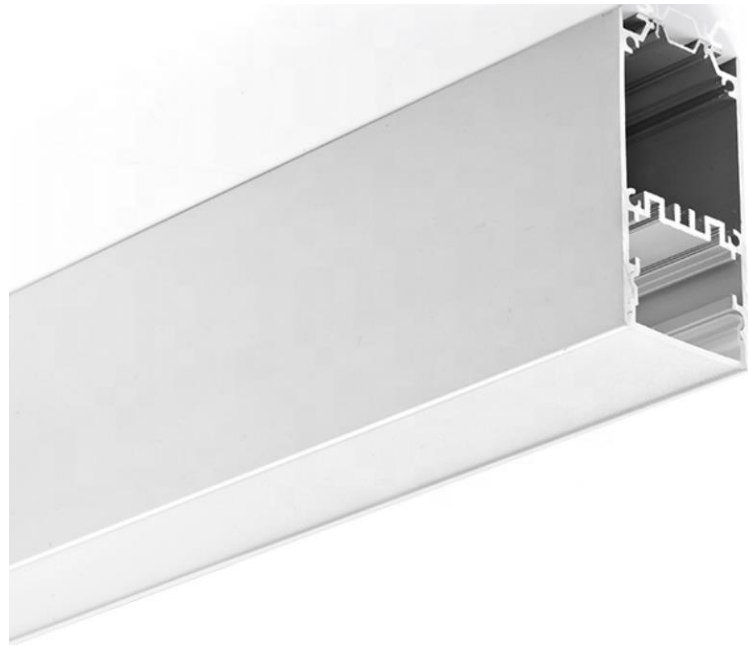
EXTRUDED ANODIZED ALUMINUM
PROFILE

SUSPENSION AND SURFACE (CEILING
AND WALL)

PC FROSTED COVER

LENGTH 2 M

RoHS CERTIFICATION

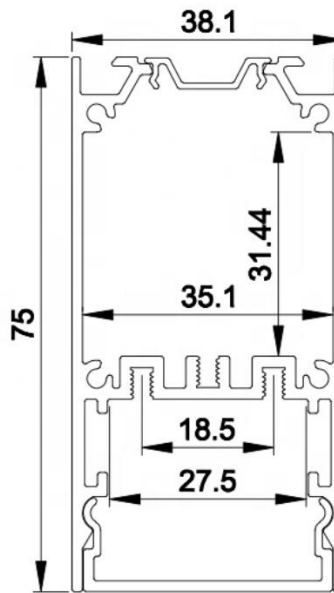


ITEM CODE	AL-ALP3875
IP RATE	20
LENGTH	2 METERS
MOUNTING TYPE	SUSPENSION AND SURFACE (CEILING AND WALL)
DIFFUSER	PC FROSTED COVER
MATERIAL	ALUMINUM

TECHNICAL DATA SHEET



MEDIDAS (MM)



TAPAS

CLAVE

EC-ALP3875



CLIPS DE SUJECION

CLAVE

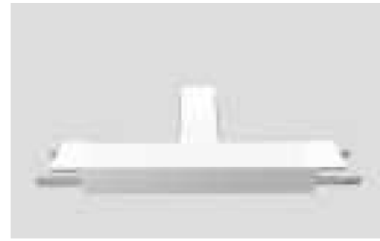
MC-ALP3875



TECHNICAL DATA SHEET



CONNECTOR T

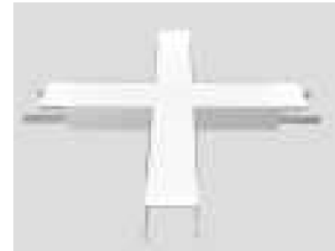


CONNECTOR L



CONNECTORS

CONNECTOR X



CONNECTOR IL

